

10172

A	B	C	D
97° 24' 41"	24.00'	94.00'	88.71'
120° 00' 19"	42.00'	104.90'	104.90'



ENK 440 004 1017:  
 [TLO AND REMOVED]  
 [CA] BATES HOUSE PORTER, LA.  
 YOU ARE IN AN OUTRIDE  
 AT THE "MIDWINTER" CAI  
 CLUB OF WEST & MICHIGAN  
 CONTACTED THAT DAY  
 BY  
 SCOTT CLARK A MEMBER



⊕ BENCH MARK: 80.62 M.S.L.  
Being A Concrete Monument  
At The Southeast Corner Of  
Lot 1 In Memorial Chase.

BASE BEARING: S 69° 18' 05" E  
Being The Bearing Of The West  
Southernly Property Line Of  
Sageen Village Subdivision

**NOTE:** The topographic information shown hereon is based upon an actual field survey performed by Evans - Graves Engineers, Inc. in November, 1953. Alterations to the topographic features after November, 1953 are not reflected hereon.

GENERAL NOTES:

EROWING: A-1  
 STREETS: 10' Separated With Open Ditch.  
 SEWER: 12" Collection Lines to Existing Place  
 Treatment Plant.  
 NOTES: Beton Bayle Water Works Co.  
 TOTAL ACRES: 140.0 Acres  
 AMORTIZATION: Unavailable  
 CALC. 100 YR. FLOOD: Zone "C"

**MAGNOLIA CHASE**  
(FORMERLY CHIPPENDALE PLACE)

1. Preparation of the sample

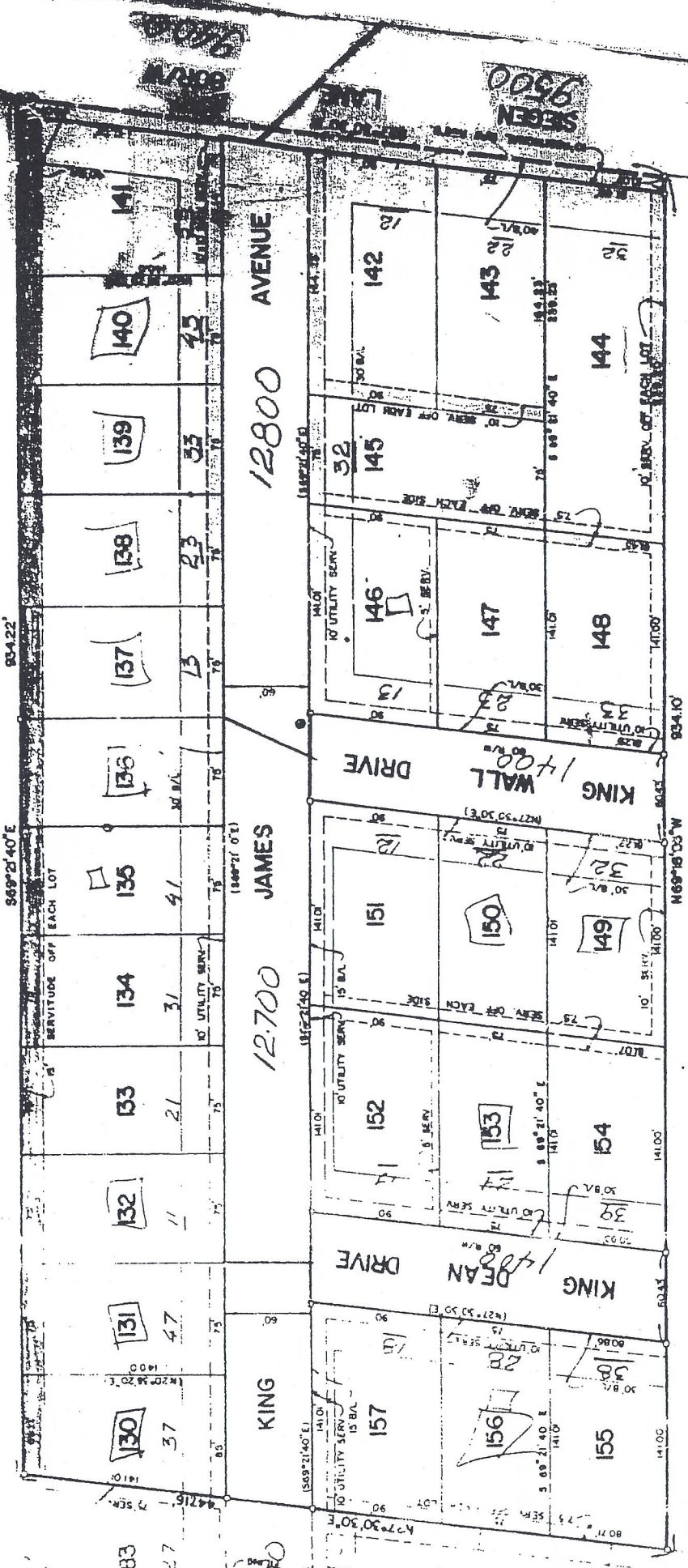


UNDER SYSTEM UNDER THE WITHIN OF SEWER TREATMENT AND  
 SPECIAL HAS BEEN APPROVED BY THE EAST BRITON VILLAGE PARISH  
 HEALTH UNIT  
 DATE 4.2.17

REVISION APPROVED  
 PLANNING COMMISSION  
 CITY OF BATON ROUGE AND  
 PARISH OF EAST BATON ROUGE  
 DATE 2/7/80

ACCEPTED  
 FOR MAINTENANCE  
 DATE 2/2/80

HENRY E. KLEMPETER  
 NOW OR FORMERLY



TRACT "A"  
 NOW OR FORMERLY

FINAL PLAT

OF

ACCEPTED  
 FOR MAINTENANCE  
 DATE 2/2/80

ACCEPTED  
 FOR MAINTENANCE  
 DATE 2/2/80

# SIEGEN VILLAGE SUBDIVISION

(FORMERLY BARKLEY PLACE SUBDIVISION 2nd FILING)

MAJOR STREET setback  
 1-1 80' From E